

# Colonia PUR

## PRODUCT SPECIFICATION

### Key Features

- > Wood, stone & slate designs
- > Multiple plank & tile sizes
- > Inlay accessories available
- > Low VOC emissions
- > Designed for residential interiors



Product Format	Standard	Result
Gauge	ISO 24346 (EN 428)	2.0mm
Wear Layer	ISO 24340 (EN 429)	0.20mm
Total Weight	ISO 23997 (EN 430)	3680g/m <sup>2</sup>
Finish		PUR

Plank & Tile Sizes	Size	Shades	Quantity per Box	Coverage per Box/Roll
Plank	101.6mm x 914.4mm	3	36	3.34m <sup>2</sup>
	152.4mm x 914.4mm	2	24	3.34m <sup>2</sup>
	152.4mm x 1219.2mm	3	18	3.34m <sup>2</sup>
	184.2mm x 1219.2mm	7	15	3.37m <sup>2</sup>
Tile	304.8mm x 304.8mm	4	36	3.34m <sup>2</sup>
	304.8mm x 609.6mm	3	18	3.34m <sup>2</sup>
	457.2mm x 457.2mm	4	16	3.34m <sup>2</sup>

Performance Requirements	Standard	Result
General Performance	ISO 10582 (EN 649)	Conforms
Use Area	ISO 10874 (EN 685)	22
Slip Resistance	EN 13893 DIN 51130 / DIN EN 16165 Ann. B AS 4586	Class DS R10 R10
Binder Content	ISO 10582	Type I
Abrasion Resistance	EN 649	Group T
Reaction to Fire	EN 13501-1 ASTM E662 ASTM E648	Class Bfl-S1 <450 Pass Class 1
Static Electrical Propensity	EN 1815	≤2.0kV Classified as 'antistatic'
Residual Indentation	ISO 24343-1	<0.05mm*
Castor Chair (continuous use)	ISO 4918 (EN 425)	Suitable
Dimensional Stability	ISO 23999 (EN 434)	≤0.10%

<b>Underfloor Heating</b>		Suitable, max 27°C
<b>Light Fastness</b>	ISO105-B02 (Method 3)	≥6

\*Average test value from current production.

## Sustainability

	Standard	Result
<b>BRE Green Guide</b>		A ENP 429
<b>Generic EN 15804 EPD</b>		Available
<b>Recyclable</b>		100%
<b>Recycled Content</b>		Up to 40%
<b>REACH</b>		Compliant
<b>Indoor Air Comfort Gold</b>		Eurofins certified product
<b>FloorScore</b>		Certified
<b>Finnish M1 Classification</b>		Certified
<b>AgBB/ABG</b>		Pass
<b>Responsible Sourcing</b>	BES 6001 SA 8000	Very good Approved Factory

## Acoustic Performance

	Standard	Result
<b>Impact Sound Reduction</b>	ISO 10140-3	2dB

## Maintenance Performance

	Standard	Result
<b>Resistance to Chemicals</b>	ISO 26987 (EN 423)	Good resistance

Regular light maintenance is more cost-effective than periodic heavy maintenance and more beneficial to the floor covering.



BS EN 14041

EN 14041

### Polyflor Ltd. Head Office

PO Box 3, Radcliffe New Road, Whitefield, Manchester, M45 7NR • Tel: +44 (0) 161 767 1111 • Email: [info@polyflor.com](mailto:info@polyflor.com) • [www.polyflor.com](http://www.polyflor.com)

© At the time of writing and publication of sheet, all the information is specified correctly. The company reserves the right to change the specifications of this product at any time without prior notice to third parties.

# Colonia PUR

## RANGE SHADES

---

### 101.6mm x 914.4mm

4" x 36"



Mountain Alder **4401**

LRV 26



Golden Koa **4403**

LRV 27



Woodland Oak **4411**

LRV 19

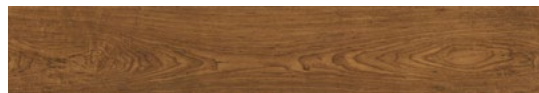
### 152.4mm x 914.4mm

6" x 36"



Oxford Maple **4431**

LRV 28



Virginia Walnut **4432**

LRV 13

### 152.4mm x 1219.2mm

6" x 48"



New England Elm **4433**

LRV 51



Schoolhouse Oak **4434**

LRV 27



English Oak **4435**

LRV 31

**184.2mm x 1219.2mm**  
7.25" x 48"



Nordic White Oak **4436**

LRV 54



Coastal Driftwood **4453**

LRV 23



Kings Oak **4437**

LRV 9



Cliff Top Oak **4438**

 LRV 38



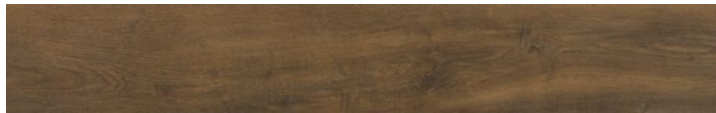
Winchester Oak **4452**

 LRV 30



Hampton Oak **4439**

 LRV 29



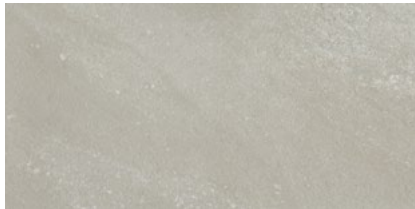
Fired Oak **4454**

 LRV 15

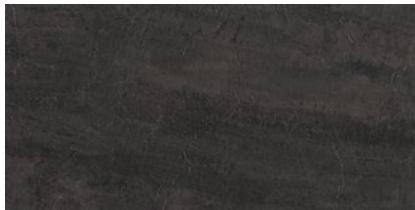
**304.8mm x 609.6mm**  
12" x 24"



Glazed Metalstone **4533** LRV 35



Balmoral Grey Slate **4534** LRV 40



Welsh Raven Slate **4535** LRV 7

**304.8mm x 304.8mm**  
12" x 12"



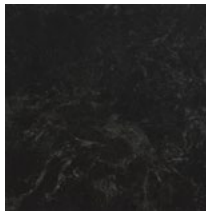
Cottage Yorkstone **4531**  
LRV 48



Quarried Millstone **4532**  
LRV 15



Stencilled Concrete **4526**  
LRV 56 



Imperial Black Marble **4515**  
LRV 5

**457.2mm x 457.2mm**  
18" x 18"



Silvered Concrete **4527**  
LRV 60



Refined Concrete **4528**  
LRV 22



Natural Limestone **4536**  
LRV 54



Fossil Limestone **4537**  
LRV 40