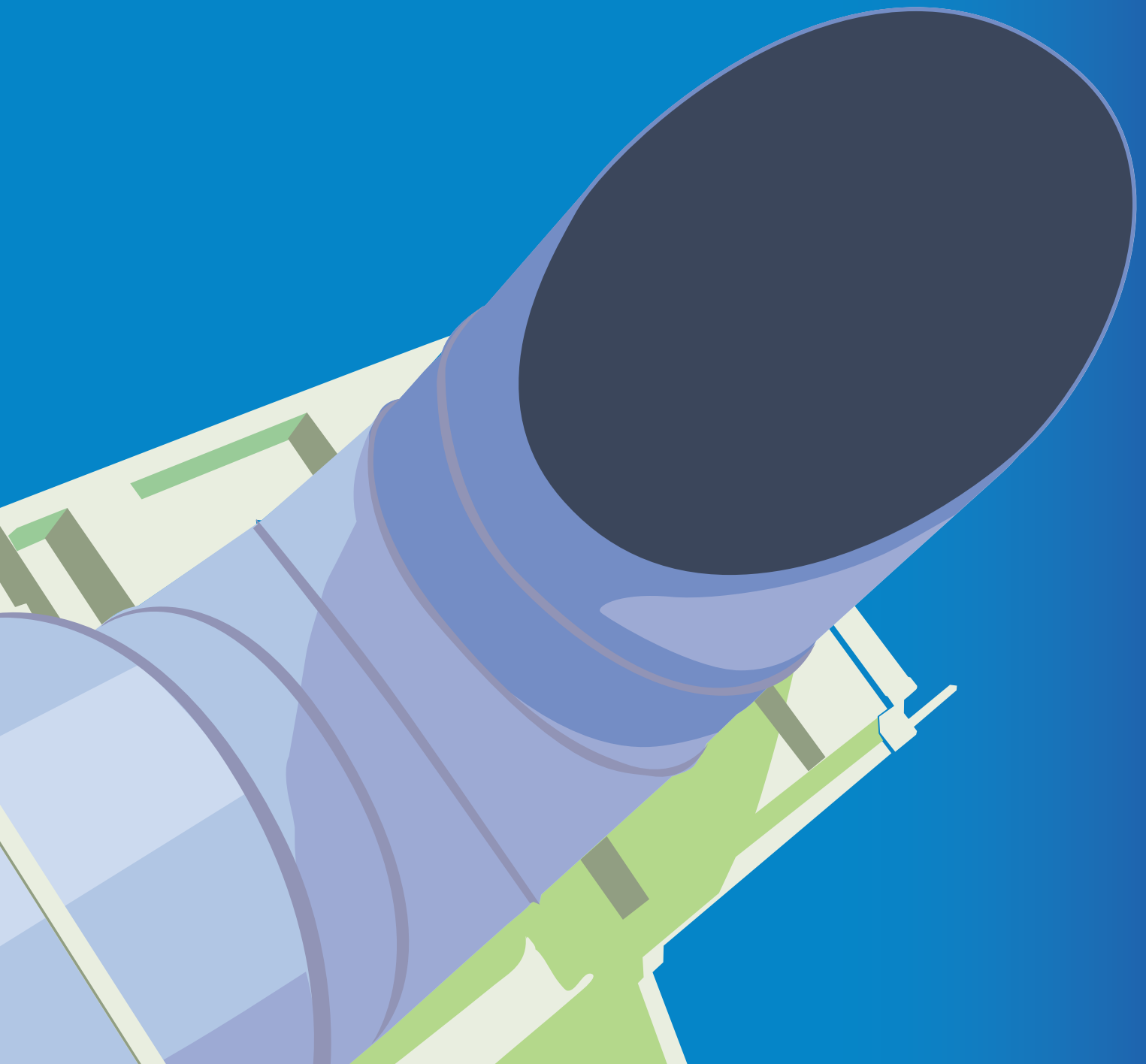




LEED® Environmental Information



Energy Consumption per m² of flooring manufactured has reduced by 43% in the last 10 years



Environmental Performance

As a responsible UK manufacturer, we are ever mindful of how our operations and products can affect the environment and therefore look to minimise our environmental impact as much as possible. Polyflor is an environmentally and economically sustainable business guided by key goals set out within our ISO 14001 environmental management system. The Polyflor Environmentally Preferable Flooring Report 2011, available to view on www.polyflor.com/environment, provides details of our environmental progress and all aspects covered within a life cycle analysis approach.

Reasons to specify Polyflor

Choosing an environmentally preferable product from Polyflor means zero compromise on the function of the product. Whether it is an aesthetic function, a wide array of choice available, hygiene, ease of maintenance, durability and safety (underfoot, fire performance and air quality), you can be assured that at all times these work hand in glove with the environmental performance of the product.

Financial constraints are also a critical factor when choosing a floorcovering. At Polyflor we do not believe that there needs to be exclusivity between environmental performance and price. Not only is our flooring great value but it is cost effective whilst in use with exceptionally low maintenance requirements.

Environmental Key Performance Indicators

Materials

Our materials are responsibly sourced through suppliers who are or aim to be ISO 14001 certificated as Polyflor. Vinyl is made up of 43% ethylene (oil) and 57% chlorine (salt) - salt being one of the world's most abundant natural resources. Calcium carbonate is sustainable filler and plasticisers (non classified substances) are added to enhance product performance within various operational temperatures.

Manufacturing & Logistics

The amount of energy required per m² of material produced has fallen by 43% since 2000. Since this time carbon emissions have been reduced by 15,236 tonnes. This reduction is due to ambitious environmental objectives we set ourselves in accordance with ISO 14001. Furthermore with a typical 20-25 year life, fewer replacements are required.

Water use minimisation is important for the environment. On site rainwater is stored and used to substitute mains supply, saving a valuable, natural resource. 96% of the water used is recycled water, with just 4% coming from mains supply.

Polyflor distributes product globally, with efficiency through the transportation of full, bulk loads. A benefit of vinyl flooring being much lighter than other flooring materials produces a positive outcome in transit, reducing fuel consumption.

In Use

The in-use phase of the resilient flooring life-cycle accounts for around 80% of its environmental impact. Therefore all of our ranges are designed with low maintenance features, whereby energy intensive cleaning is not required. PU, PUR and Supratec PUR ranges are the easiest to clean, ensuring that use of water (55% less), polish (PUR is polish free for life), strippers and chemical cleansers are significantly reduced.

VOC emissions on our product ranges are all below the strictly set accepted levels with no negative contribution to indoor air quality and have passed the most stringent, independent VOC emissions tests including AgBB and FloorScore®.

End of Life

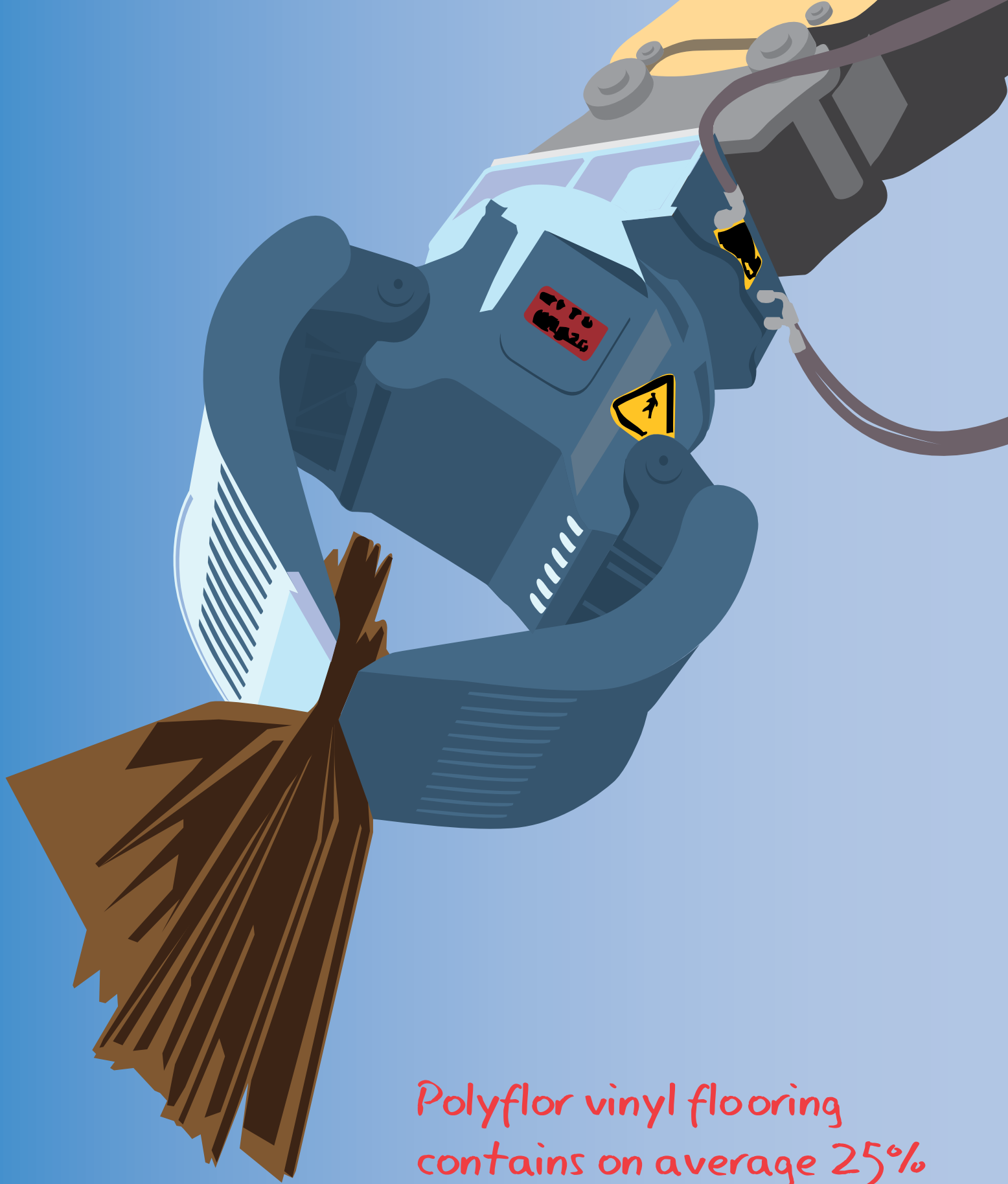
Vinyl is 100% recyclable and unlike many alternative materials, it does not weaken and lose performance.

Polyflor is the largest vinyl flooring manufacturer in the UK, producing a wide range of products. Recycling of post production waste is high and increasing significantly year on year, with 10,628 tonnes being recycled in 2010. On average recycled content is 25%, a level used across many high volume ranges. We believe that quoting an average percentage across various ranges is more helpful than quoting a high figure for one range.

Encouraging more post consumer waste to be recycled is important to Polyflor and in 2009 Polyflor became one of two founding and funding members of Recofloor, the industry vinyl take-back scheme. Through this scheme, 365 tonnes of vinyl waste was recycled back into new product in 2010 - either new flooring or if heavily contaminated it is recycled into other useful products, such as road traffic cones.

Life Cycle Assessments

In external LCA and environmental assessments Polyflor products perform excellently. Therefore using our flooring in a project will typically contribute positive credits to any environmental rating scheme for the building in question. Globally there are various environmental schemes in operation, including BRE Global, LEED® in North America, Ecospecifier in Australia and South Africa and BASTA in Sweden. These schemes help architects, specifiers and planners make an informed decision on a product's environmental impact and performance, therefore helping them choose the most sustainable product available. For instance Polyflor's homogeneous, safety, luxury vinyl tiles and heterogeneous ranges achieve BRE Global A+ ratings across key use areas including health and education and also contribute to LEED® points, as will be further illustrated.



*Polyflor vinyl flooring
contains on average 25%
recycled material and is
100% recyclable*

Polyflor and LEED® – Leadership in Energy & Environmental Design

Detailed in this section are areas where Polyflor commercial floorcoverings have the potential to contribute to LEED® points.

Water Efficiency

WE Credit 3.2: Water use reduction (30% reduction)

In production Polyflor uses only 4% of its water supply from mains, with 96% being recycled from the lodge water. Polyflor's Polysafe PUR and Polysafe Supratec PUR floorcoverings use 60% less water than non PUR vinyl and Polyflor's homogeneous PUR floorcoverings use 55% less water.

Energy & Atmosphere

EA Credit 1: Optimize energy performance

Polyflor flooring is energy efficient in the production phase of its life cycle, using 43% less energy than 10 years ago and in that time reducing carbon emissions by 15,236 tonnes.

Over the in use phase of its life cycle, our low maintenance

families (PU, PUR & Supratec PUR) will save energy through reduced usage of cleaning machinery such as machine scrubbers and burnishers (energy saving figures available upon request). Along with its 20-25 year life span, energy consumed and carbon dioxide emissions are significantly reduced.

Materials & Resources

MR Credit 1.1: Building reuse (maintain 75% of existing floors)

Polyflor ranges have excellent durability. Vinyl flooring is renowned for its longevity of life compared to many alternative resilient floorcoverings – typically 20-25 years.

MR Credit 2.1: Construction Waste Management (divert 50% from disposal)

MR Credit 2.2: Construction Waste Management (divert 75% from disposal)

Dedicated to the 'Halving Waste to Landfill' commitment, the Recofloor scheme (of which Polyflor is one of two founder members) complies with site waste management legislation and diverts vinyl flooring waste (off-cuts and uplifted) from going to landfill.

MR Credit 4.1: 10% Recycled content (post-consumer + ½ pre-consumer)

MR Credit 4.2: 20% Recycled content (post-consumer + ½ pre-consumer)

Polyflor homogeneous ranges contain an average of 25% recycled material, which includes process waste, sampling waste, materials from site and from the distribution chain. In 2010 we recycled 10,628 tonnes of production waste and over 365 tonnes of post consumer waste back into new product.

MR Credit 5.1: Regional Materials (10% extracted, processed & manufactured regionally)

MR Credit 5.2: Regional Materials (20% extracted, processed & manufactured regionally)

As a global company, Polyflor flooring is manufactured in the UK, across Europe and Asia and raw and recycled materials are locally sourced.



Indoor Environmental Quality

IEQ Credit 4.1: Low emitting materials (adhesives and sealants)

In North America, Polyflor recommend Mapei Eco 350 and 360 for all homogeneous sheet floorcoverings. For our luxury vinyl tile ranges, we recommend Mapei Eco 300 and 360. For Polysafe ranges, Polyflor recommend the use of Mapei G 21 – 2 part polyurethane, which is solvent free.

These adhesives are rated 'extremely low TVOC' and are low odour, non flammable and solvent free. They also meet the Carpet and Rug Institute (CRI) low VOC emission criteria, achieved through the Indoor Air Quality Adhesive Testing Programme.

IEQ Credit 4.3: Low emitting materials (carpet systems)

All of our flooring ranges have already passed key international standards but over the last couple of years we have reformulated all our ranges to ensure their VOC emissions are kept to the lowest levels achievable. The VOC emissions on our range of flooring products have been tested by independent laboratories and are all below the strictly set, acceptable levels of the AgBB test method.

Polyflor has also achieved FloorScore® certification in accordance with SCSEC-10.2-2007 'Indoor Air Quality Performance' through Scientific Certification Systems Indoor Air Quality Programme, conforming to Collaborative for High Performance Schools (CHPS) criteria and the California 01350 Specification. We have had the following key ranges evaluated:

Polyflor Homogeneous Vinyl Flooring

Pearlazzo PUR • 2000 PUR • Mystique PUR • Classic Mystique PUR • Prestige PUR • XL PU • Standard XL

Polyflor Safety Vinyl Flooring

Polysafe Standard • Polysafe Vogue Ultra PUR • Polysafe Hydro • Polysafe Mosaic PUR • Polysafe Corona PUR • Polysafe Astral PUR • Polysafe Ultimate (Ultima).

Polyflor Luxury Vinyl Tiling

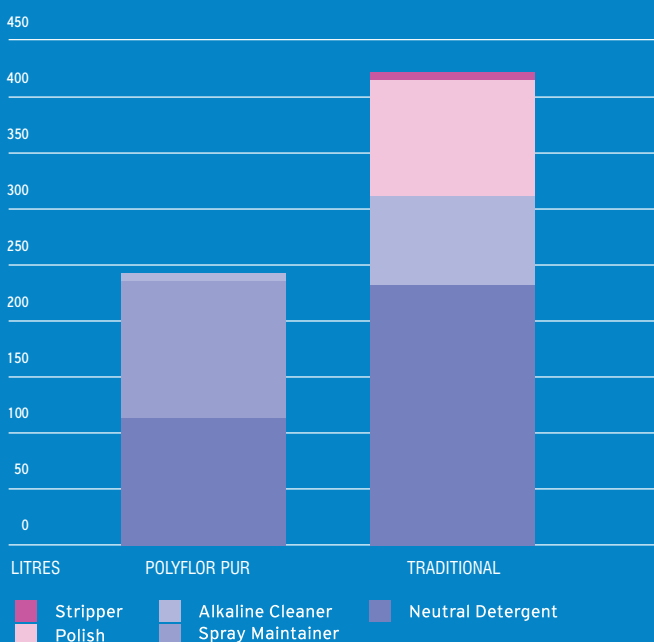
Bevel Line PU • Camaro Studioflor PU • Colonia Homeline • Expona Design • Kudos PU

Certificates for these products are available on the SCS website, www.scs-certified.com

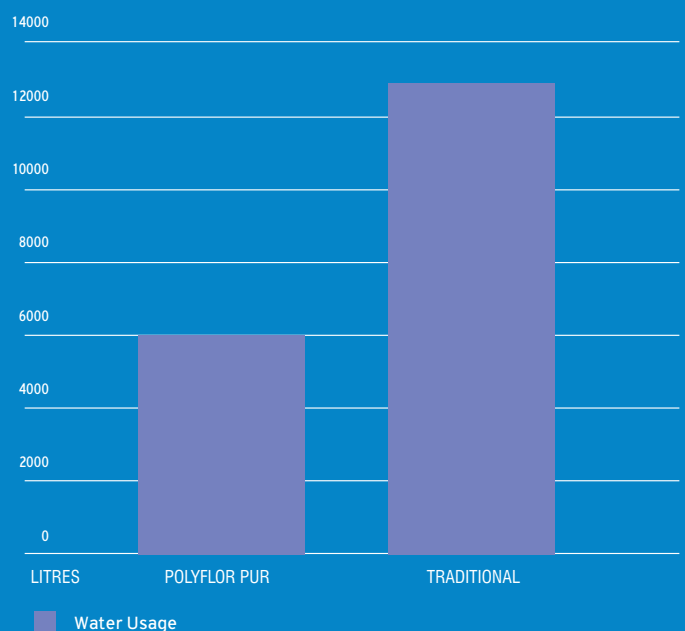
IEQ Credit 5: Indoor chemical & pollutant source control

The easier to clean PU and PUR ranges ensure that the use of cleaning chemicals, strippers and water are significantly reduced. Polyflor's homogeneous PUR facilitates a life long polish free maintenance regime.

CHEMICAL USAGE 1 year 1000sqm PUR vs traditional vinyl



WATER USAGE 1 year 1000sqm PUR vs traditional vinyl



SAVE UP TO **60%** ON MAINTENANCE
 USE UP TO **55%** LESS WATER

USA distribution:

Gerbert Limited
119 South Tree Drive
Lancaster
PA 17604-4944
Tel: (717) 219 5035
(800) 828 9461
E-mail: gerbertinfo@gerbertltd.com

Canadian distribution:

Polyflor Canada
304 Stone Road West
Suite 550
Guelph
Ontario
N1G 4W4
Tel: (519) 763 3088
E-mail: acrawford@polyflor.ca

Dantra Specialty Products
31 Sterns Court
Burnside Industrial Park,
PO Box 380008
Dartmouth NS
B3B 1X2
Tel: (902) 468 7165
Toll Free: 1.800.565.3567
E-mail: george@dantra.com

Primco Limited
Branches: Winnipeg, Saskatoon,
Regina, Calgary, Edmonton, Richmond

Head Office
12300 44 St. S.E.
Calgary AB
T2Z 4A2
Tel: (403) 255 4416
E-mail: c.overacker@primco.ca

Solflex
8905 Henri-Bourassa West
St. Laurent
Quebec
H4S 1P7
Tel: (514) 337 4866
E-mail: avilliard@solflex.com

CDS Distribution
42 Heath Street East
Toronto
Ontario
M4T 1S3
Tel: (416) 966 3322
E-mail: kmotley@rogers.com

Weavercraft Distributors Inc
482-19567 Fraser Highway
Surrey BC
V3S 9A4
Tel: (604) 730 9481
E-mail: jon@weavercraft.com

Mexico distribution:

Jena Clean Rooms S.a De C.v
Zempoala No. 135,
Col. Narvarte,
Del Benito Juarez,
C.P. 03020
Tel: (55) 5530 8633
(55) 5519 0640
Email: jenclean@prodigy.net.mx

Middle East office:

Polyflor Middle East
Office No.2, First Floor,
Jumeirah Centre,
Jumeirah Beach Road,
Dubai
Tel: (4) 349 1078
Email: espm@eim.ae



POLYFLOR LTD. PO BOX 3 RADCLIFFE NEW ROAD WHITEFIELD MANCHESTER M45 7NR UK
TEL: +44 (0)161 767 1111 **UK SALES DIRECT:** +44 (0)161 767 1122 **UK SAMPLE REQUESTS:** +44 (0)161 767 2551
EXPORT SALES DIRECT: +44 (0)161 767 1913 **TECHNICAL SUPPORT:** +44 (0)161 767 1912
UK FAX: +44 (0)161 767 1128 **EXPORT FAX:** +44 (0)161 767 1166
E-MAIL: ENVO@POLYFLOR.COM **WEBSITE:** WWW.POLYFLOR.COM

James Hallett
FLOORING

