

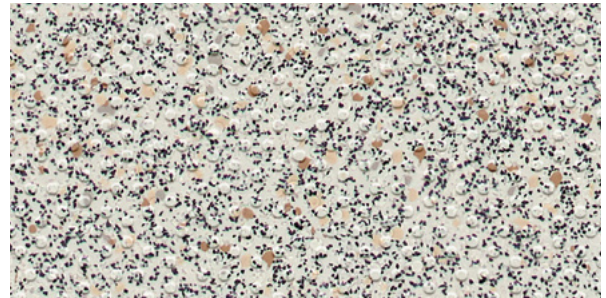
FOR CONTINUALLY WET AREAS, BAREFOOT & SHOD

SAFETY FLOORING



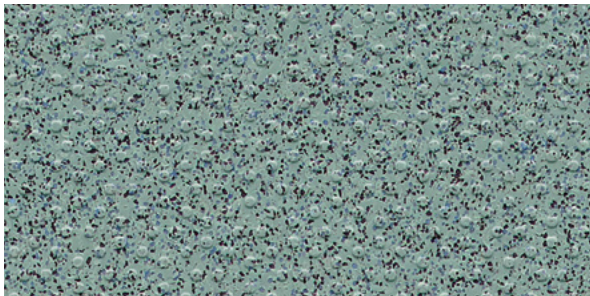
White Stone H4930
NCS S 2000-N

w/r 4930
LRV 44



Bisque H4860
NCS S 2002-Y50R

w/r 4860
LRV 46



Sheared Slate H4960
NCS S 4010-B50G

w/r 4960
LRV 26



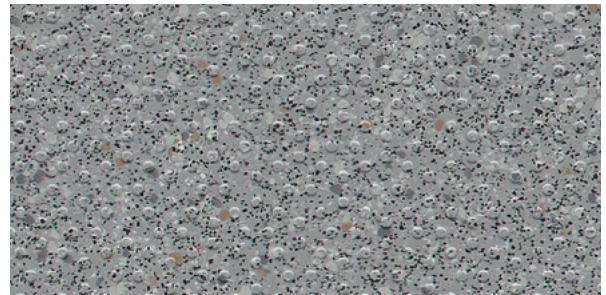
Oystershell H4800
NCS S 3010-Y60R

w/r 2010
LRV 34



Tempered Steel H4940
NCS S 4502-B

w/r 4940
LRV 25



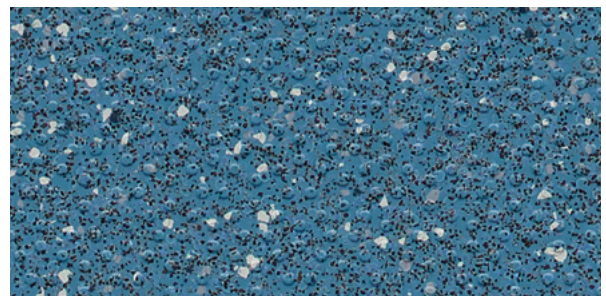
Woodland Grey H4770
NCS S 4500-N

w/r 9120
LRV 28



Blue Forge H4850
NCS S 5030-R70B

w/r 4850
LRV 9



Marine H4870
NCS S 4030-B

w/r 4700
LRV 19

w/r = weld rod NCS = Natural Colour System LRV = Light Reflectance Value