



**POLYFLOR™**  
COVERING THE WORLD

# Polysafe™ Apex

Standing the Toughest of Tests

SAFETY FLOORING



# Polysafe™ Apex

Welcome to Polysafe Apex, the safety flooring heavyweight designed to stand the toughest of tests in those extreme areas. In food processing, production and kitchen environments, where there is plenty of movement over the floor, a high number of meals served and food processed daily plus frequent spillages, the specified flooring needs to last the pace.

To meet these demands, super tough Polysafe Apex is complete with specially enhanced slip resistant properties, to ensure the optimum in underfoot safety and added protection to employees. In intensive commercial and industrial environments where prolonged activity means workers are regularly rushing around, Apex provides the required underfoot comfort which allows users to feel at ease and confident on their feet.

For long term slip resistance year in, year out look no further than Polysafe Apex, a sheet vinyl flooring offering the pinnacle of performance to meet an employer's duty of care requirements.

## where is it used?

Ideally suited to areas of intensive food production and processing where there are risks of spillages which are more viscous in nature, Apex is specifically designed to minimise slip risk whilst withstanding the daily rigours of those tough and enduring industrial environments. Also suited to busy kitchen areas whether gourmet, commercial or fast food environments where over 100 meals are served daily and frequent frying is undertaken, Apex maintains slip resistance levels in spite of regular contamination from oil and grease.



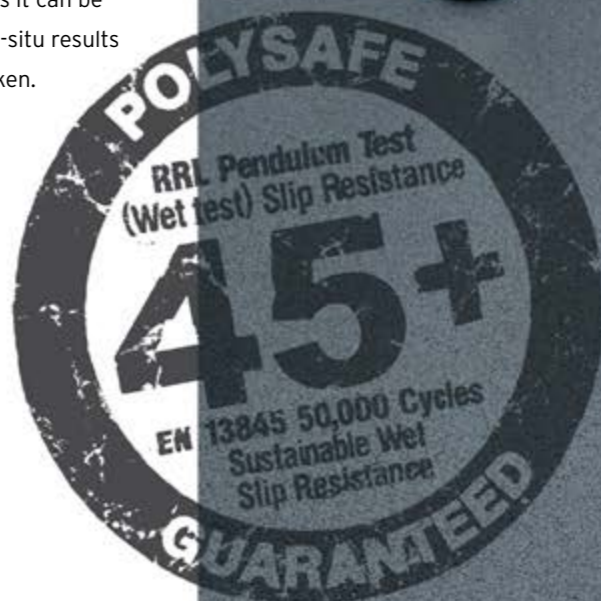
## sustainable wet slip resistance

Safety flooring with sustainable wet slip resistance is the cornerstone of all Polysafe flooring manufactured by Polyflor. With increased levels of silicon carbide, coloured quartz particles and natural recycled aggregate in the vinyl, the slip resistance of Polysafe Apex is assured for the guaranteed life of the product. Demonstrating that these safety particles offer durable, long term performance, Apex fully meets requirements of the 50,000 cycles abrasion test within the European Safety Flooring Standard EN 13845. This test involves grit being continuously applied to show the true depth of aggregate in the product.



Due to this high concentration of safety particles, Apex achieves a result 45+ on the Pendulum Wet Test (4S Rubber/Slider 96), meeting the category of low slip potential and ensuring Health and Safety Executive (HSE) Compliance. The Pendulum Test is HSE's recommended method of measuring slip resistance as it can be monitored over the lifetime of the floor to give live in-situ results after installation and maintenance has been undertaken. Add in Apex's result of 70 microns + using a surface roughness meter - the complementary slip test method recommended to be used in conjunction with the Pendulum and all in the specification chain have complete piece of mind.

As well as providing sustainable wet slip resistance, Apex also achieves an ex-factory R12 rating to both DIN 51130 and AS/NZS 4586 standards.



## how does Apex's slip resistance work?

Polysafe Apex's key principle is function over form and the need to perform in tough conditions. The range is designed to ensure underfoot protection for workers operating in busy environments by providing sustained friction between foot and floor, despite regular contamination.

Apex's unique surface roughness, formed through a concentrated level of safety particles through the vinyl and a specially engineered emboss is designed to provide top level sustainable slip resistance. In intensive food production and commercial kitchen areas, the regular occurrence of cooking oil, grease and wet contaminants spilt onto the floor creates the potential for the formation of a squeeze film - heavily compressed fluid trapped between shoe and floor which prevents solid-to-solid contact and would pose a slip risk if incorrect flooring is specified. The thicker the contaminant, the higher level of surface roughness is required on the flooring in order to penetrate this squeeze film and achieve continued friction between foot and floor.

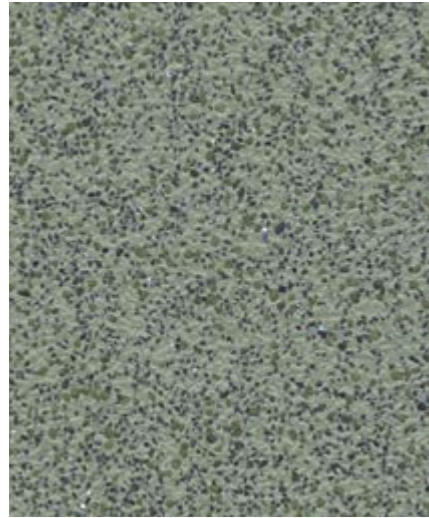
Choosing Apex, with a surface roughness of 70 microns and above, ensures the more viscous margarine, olive oil and cooking stock spillages can be accommodated, breaking through the squeeze film and maintaining slip resistance.

## maintenance

With an emboss that facilitates straightforward maintenance, Polysafe Apex can be cleaned easily with a traditional mop and bucket system using neutral or alkaline cleanser diluted as required. Approved maintenance product sheets are available to download via [www.polyflor.com](http://www.polyflor.com). It is also recommended that a rotary machine scrubber is used as part of a regular maintenance programme.

Available in a flexible sheet format to enable ease of coving and working around drainage points, Apex can be welded at the seams with a colour co-ordinated weld rod to create an impermeable finish and provide improved hygiene protection. This fully sealed solution avoids the potential for cracked grout lines and subsequent dirt ingress.

# Polysafe Apex



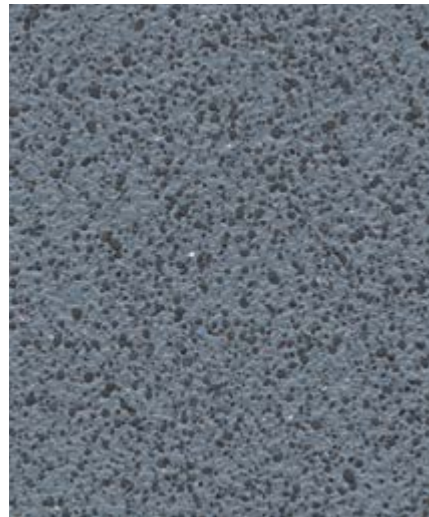
Green Quartz 4201  
w/r 4350  
NCS S 5005-G50Y  
LRV 24.0



Siltstone 4205  
w/r 4600  
NCS S 5005-Y80R  
LRV 22.6



Chromite 4202  
w/r 4610  
NCS S 6500-N  
LRV 15.1



Breccia 4204  
w/r 4670  
NCS S 5010-R90B  
LRV 17.8



Red Ochre 4206  
w/r 4206  
NCS S 5030-Y80R  
LRV 12.8



Biotite 4203  
w/r 8640  
NCS S 8000-N  
LRV 6.1

The closest perceived NCS - Natural Colour System references are quoted for your convenience. For more information see [www.ncscolour.com](http://www.ncscolour.com)  
Light Reflectance Values (LRV) - all colours are tested in accordance with BS8300:2009.

## find out more

[www.polyflor.com/apex](http://www.polyflor.com/apex)

The Polyflor website is the main resource centre for Polysafe Apex product information.

View technical information or order free samples online

**samples direct** >>>> +44 (0)161 767 2551

Obtain free Apex product samples, shadecards and product literature - contact Polyflor Samples Direct Hotline on +44(0)161 767 2551

Screen shot  
Apex web page  
to follow

## technical specification

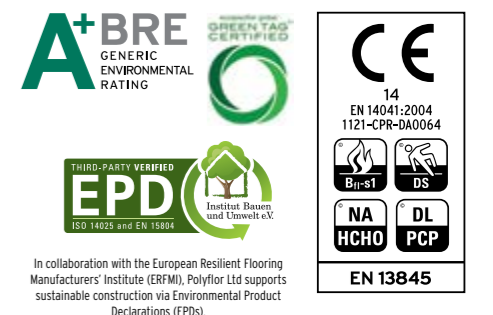
Gauge		2.5 mm
Roll Size		2m x 20m = 40m <sup>2</sup>
Product Weight		3150g/m <sup>2</sup>
General Performance		EN 13845
Use Area Classification		23, 34, 43
Reaction to Fire		EN 13501-1 Class Bfl-S1
Enhanced Slip		Sustainable wet slip resistance* EN 13845 ESf AS/NZS 4586 R12 DIN 51130 R12 RRL Pendulum Test ≥45 (wet test - 4S Rubber/Slider 96) Surface roughness Rz ≥70µm (Typical result) The slip resistance is assured throughout the guaranteed life of the product, with strict adherence to HSE Guidelines
Abrasion Resistance		EN 13845 50,000 cycles EN 649 Group T
VOC Emissions		AqBB/DiBT GBCA/NZGBC Green Star IEQ-VOC: Compliant
Environmentally Preferable Flooring		Polysafe Apex achieves BRE Global Environmental Generic A+ rating in major use areas such as education and healthcare and is GreenTag LCA Rate certified with GreenRate level A. Generic Environmental Product Declaration EN 15804 EPD is available on request. It is 100% recyclable and contains recycled material. Recyclable via the Recofloor scheme Visit <a href="http://www.polyflor.com/environment">www.polyflor.com/environment</a>
Resistance to Chemicals		Good resistance to dilute acids and alkalis. Chemical resistance charts by shade are available on request
Hygiene		All Polyflor commercial sheet vinyl ranges provide a continuous, impervious and hygienic flooring solution which can be confidently cleaned in accordance with recommended maintenance procedures and approved maintenance products. The implementation of an effective cleaning regime is the most important defence against infection
Electrical Behaviour (body voltage)		EN 1815 This product does not accumulate static charges above 2kV and is classified as 'antistatic'. For specialist applications where there is a requirement to dissipate the electrostatic charge, see the Polyflor ESD product ranges



### Polyflor Customer Technical Services Division

For advice on all technical product details on Apex, including handling and installation, suitable adhesives, maintenance, applications and chemical resistance, consult the Polyflor Customer Technical Services Department on +44(0)161 767 1912 or e-mail [tech@polyflor.com](mailto:tech@polyflor.com)

\*For clarification regarding slip resistance, consult Polyflor Customer Technical Services.





## POLYFLOR™ INTERNATIONAL

### Australia

Polyflor Australia  
Tel: +61 3 9215 4400  
Tel: 1800 777 425  
E-mail: sales@polyflor.com.au

### Canada

Polyflor Canada Inc.  
Tel: +1 905 364 3000  
E-mail: sales@polyflor.ca

### China

Polyflor Hong Kong  
Tel: +(852) 2865 0101  
E-mail: anthonylam@polyflor.com.hk

### France

James Halstead France SAS  
Tel: +33 (0) 8 20 20 32 11  
E-mail: info@jhfrance.fr

### Germany

objectflor Art und Design Belags GmbH  
Tel: +49 (0) 2236 966 330  
E-mail: info@objectflor.de

### Ireland

Polyflor Ireland  
Tel: +353 (1) 864 9304  
E-mail: salesireland@polyflor.com

### New Zealand

Polyflor New Zealand  
Tel: +64 9 269 1111  
Tel: 0800 765 935  
E-mail: sales@polyflor.co.nz

### Norway

Polyflor Nordic  
Tel: +47 23 00 84 00  
E-mail: firmapost@polyflor.no

### Poland

Polflor Sp. Z o.o.  
Tel: +48 (0) 61 820 3155  
E-mail: polyflor@polflor.com.pl

### Russia

Polyflor Contract Ltd  
Tel: +7 (812) 332 42 02  
E-mail: info@polyflor.ru

### South Africa

Poly Sales Africa (Pty.) Ltd  
Tel: +27 11 609 3500  
E-mail: info@polyflor.co.za

### Sweden

FalckDesign AB  
Tel: +46 (0) 300 15820  
E-mail: info@falckdesign.com

### United Arab Emirates

Polyflor Middle East  
Tel: +971 4 349 1078  
E-mail: espm@eim.ae

[www.polyflor.com](http://www.polyflor.com)



## POLYFLOR™ HEAD OFFICE

POLYFLOR LTD. PO BOX 3 RADCLIFFE NEW ROAD WHITEFIELD MANCHESTER M45 7NR UK

UK SALES DIRECT: +44 (0)161 767 1122

UK SAMPLE REQUESTS: +44 (0)161 767 2551

EXPORT SALES DIRECT: +44 (0)161 767 1913

UK FAX: +44 (0)161 767 1128

EXPORT FAX: +44 (0)161 767 1166

TECHNICAL SUPPORT: +44 (0)161 767 1912

RECEPTION: +44 (0)161 767 1111

E-MAIL: INFO@POLYFLOR.COM

WEBSITE: WWW.POLYFLOR.COM