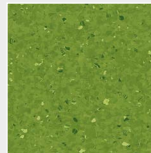
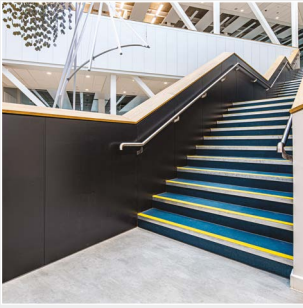
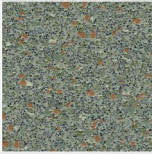
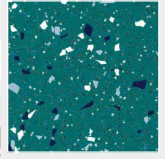
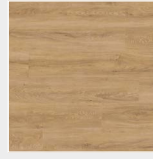


POLYFLOR™
COVERING THE WORLD



BREEAM®



Polyflor’s vast range of products, technical support and best value flooring, means you can maximise your BREEAM score without any compromise on performance, choice or budget.

Building Research Establishment’s Environmental Assessment Method (BREEAM) is the longest standing and most widely used environmental assessment method for buildings in the UK, with brand recognition globally.

Credits are awarded according to performance in 10 different categories for measuring sustainability: Management; Health & Wellbeing; Energy; Transport; Water; Materials; Waste; Land Use & Ecology; Pollution; Innovation (extra). They are then added together to produce an overall score for the building on a scale shown below:

BREEAM Rating	% Score
Outstanding	Less than top 1% of UK new non-domestic buildings (innovator).
Excellent	Top 10% of UK new non-domestic buildings (best practice).
Very Good	Top 25% of UK new non-domestic buildings (advanced good practice).
Good	Top 50% of UK new non-domestic buildings (intermediate good practice).
Pass	Top 75% of UK new non-domestic buildings (standard good practice).

How Polyflor can contribute on a BREEAM® project

Polyflor products can contribute to the award of BREEAM credits within the following categories – Materials, Waste and Health & Wellbeing

Materials

The Materials section makes up 12.5% of the overall scoring, offering 12 credits in total. Polyflor contributes to MAT 01 and MAT 03.

MAT 01: Life Cycle Impact

1 BREEAM Credit (depending on building type)

Aim: To recognise and encourage the use of construction materials with a low environmental impact (including embodied carbon) over the full life cycle of the building.

1 BREEAM Point:

Awarded for the use of one of our ranges where 3rd party verified EN 15804 compliant EPD is available.

Points awarded for each material type are then added up and weighted to award credits for this section of the project.

Polyflor products can contribute to 1 material point in the MAT 01 section for floor coverings.

MAT 03: Responsible Sourcing for Materials

3 BREEAM Credits

Aim: To recognise and encourage the specification of responsibly sourced materials for key building elements. 80% by mass of materials that make up elements must be responsibly sourced.

3.5 BREEAM Points:

BES 6001 ‘Excellent’ – Polyflor can contribute 3.5 points for the use of ranges which are certified to BES 6001, achieving ‘Excellent’.

1 BREEAM Point:

EMS certified – Polyflor can also contribute 1 additional point for having ISO 14001 environmental management system certification.

Use of Polyflor ranges with BES 6001 ‘Excellent’ and ISO 14001 certification, contribute 4.5 out of a maximum of 5 points (90% of available points) towards the award of 3 credits in MAT 03. Floor finishes are considered with all other fittings such as windows and doors on a mass basis for the fittings part of the credit.

The data from the whole building is then weighted and buildings achieving greater than 54% of the available points are awarded a maximum of 3 credits.

Use of Polyflor ranges can significantly contribute to credits in MAT 03.

Waste

The Waste section makes up 7.5% of the overall scoring, offering 7 credits in total. Polyflor can contribute to the credits available to flooring for WST 01 and will contribute towards a maximum score for ‘diversion of resources from landfill’.

WST 01: Construction Waste Management

4 BREEAM Credits plus 1 Exemplary Level credit

Aim: To promote resource efficiency via the effective management and reduction of construction waste.

1 BREEAM Credit:

Diversion of Resources from Landfill – Use the Recofloor take-back scheme in conjunction with a site waste management plan (SWMP) to remove waste vinyl flooring from the construction project. This can contribute towards the available credit on a BREEAM assessment.

BREEAM Exemplary Level Credit:

Available where demolition and non-demolition waste is kept to under challenging volumes/tonnages (85% by volume and 95% by weight) and diverted from landfill. Use of the Recofloor scheme can help achieve this for flooring demolition waste and non-demolition waste, as the material is taken back and recycled.

Use of Polyflor materials and the Recofloor Scheme demonstrates diversion from landfill, potentially contributing towards 1 credit for diversion of resources from landfill and 1 exemplary level credit.

Health & Wellbeing

The Health & Wellbeing section makes up 15% of the overall scoring, offering 10 credits in total. Polyflor can contribute towards 1 credit for HEA 02: Indoor Air Quality.

HEA 02: Indoor Air Quality

6 BREEAM Credits

Aim: To recognise and encourage a healthy environment through specification and installation of appropriate ventilation, equipment and finishes.

1 BREEAM Credit

Minimising sources of VOCs and formaldehyde – Polyflor can contribute towards this credit through demonstrating conformance to EN 14041:2004. Polyflor floor coverings are UK REACH compliant and do not contain formaldehyde, conforming to the E1 declaration. All Polyflor products have low VOC emissions.

The use of Polyflor materials can contribute towards 1 Health & Wellbeing credit for minimising sources of VOC and Formaldehyde.



CASE STUDY

STI Poynton Barbara Hepworth Building University of Huddersfield

Achieved BREEAM 'Excellent Rating'

PRODUCTS USED:

Expona Flow PUR, Bloc PUR,
Polysafe Stone & Wood fx, Finesse SD



University of Huddersfield's new School of Art, Design and Architecture, showcasing bespoke Polyflor Expona Flow PUR patterns at the heart of its creative environment.

Collaboration and innovation are central themes at the new, £30 million Barbara Hepworth Building. Much like the work of the famed Yorkshire sculptor, the building responds to the topography of the local landscape with a cantilevered design which welcomes visitors from the canal-side location and spans a five-metre elevation change. The façade is veiled with laser-cut metal cladding which references the town's textile heritage.

Inside, the faculty comprises flowing spaces set around an internal atrium, which is easily adapted to meet the varied needs of the multi-disciplinary faculty. The state-of-the-art facilities incorporate the latest motion capture and digital visualisation technologies, whilst also supporting a range of traditional crafts.

Polyflor collaborated closely with AHR, Morgan Sindall and Phoenix Flooring using a variety of vinyl flooring products to create a flooring specification which properly reflects the building's artistic and practical aspirations.

The multi-floor central atrium is set around a feature staircase and the design team were eager for this space to be attractive and easily navigable whilst also encouraging interaction between the different disciplines housed in the building. To help support these goals, we worked with the project team to create a bespoke flooring design using Expona Flow PUR.

The vinyl sheets beautifully recreate the aesthetic of wood and concrete floors and provide excellent durability in this high traffic area. AHR and our technical team designed and developed a bespoke pattern for each atrium area into CAD designs, combining Warm Limed Ash, Steel Blue and Light Industrial Concrete colours. These patterns are both attractive and help students to intuit and navigate the surrounding open-plan spaces and adjoining rooms.

Once the designs were agreed, we produced the flooring at our site in Manchester and supplied them to Phoenix Flooring to be installed. Through careful measurement, we were able to ensure that the flooring supplied precisely matched the dimensions of the finished space, allowing them to complete a streamlined installation.

A number of other Polyflor products were also utilised to provide a high-quality flooring finish throughout the new building.

Polyflor Finesse SD was chosen for the communication and infrastructure rooms where static build-up needs to be carefully controlled. The product has been specially developed for these types of environments, ensuring a uniform flow of electrostatic discharge to a ground point.

Polysafe Stone FX PUR and Wood FX PUR were also specified in areas where there was potential for water spillage. The products have been assessed under many of the most demanding international assessments for slip resistance and achieve a Pendulum Test Value of 36+ for a low slip potential classification under HSE Guidance.

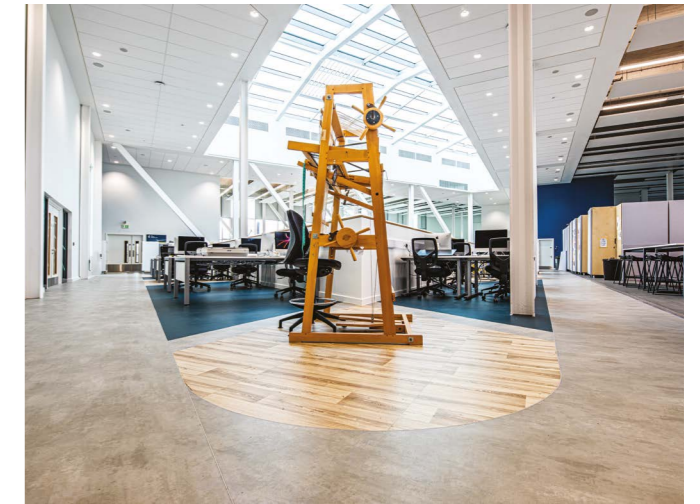
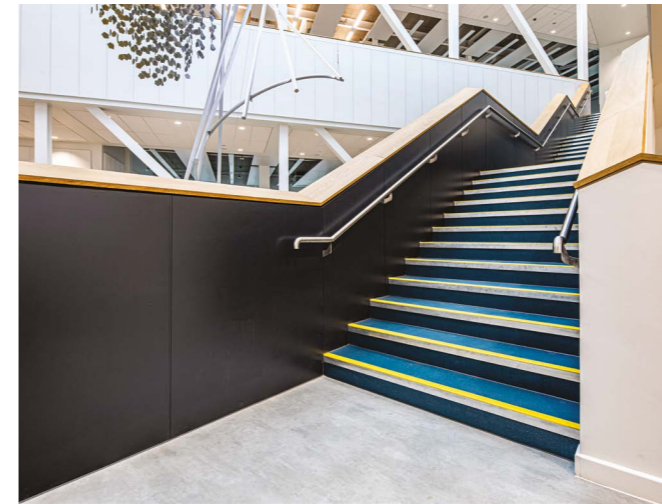
The specification was completed with the use of hardwearing Bloc PUR in Classic Black and Urban Chic. These simple shades of black and grey complemented the use of neutral stone, concrete and wood finishes across the building's floors. By specifying Polyflor products across the building, flooring maintenance is streamlined.

The complex site layout and atrium space posed a key challenge during the installation phase. To overcome this, we collaborated with Morgan Sindall and Phoenix Flooring to develop and commission a bespoke pallet lifting system using an internal crane. This allowed the 2 metre vinyl roles to be easily and safely lifted to the upper floors.

Once all the sections were lifted, Phoenix Flooring set them out to our CAD layout carefully checking them for precision of location. This meticulous approach allowed the 551 sections to be accurately installed in all areas of the building in a period of just 12 weeks.

"Polyflor's technical staff were on hand throughout the installation period to provide aftersales service by telephone and in person if required to support our supervisor and operatives on site. The bespoke pallet system ensured we delivered best working practice in our health and safety obligations."

Matt Brown, Director, Phoenix Flooring



From the outset, the scheme was designed to achieve BREEAM 'Excellent' and the Polyflor products are expected to contribute towards the award of credits under this scheme.

The sheets are certified as 'Excellent' under the BES 6001 responsible sourcing standard. In addition, the products feature recycled content and are 100% recyclable at end of life through the Recofloor scheme - supporting the circular economy.

The products have also been certified under the Eurofins Indoor Air Comfort Gold scheme. This shows they emit exceptionally low levels of volatile organic compounds (VOCs) and are compliant with the most demanding voluntary indoor air quality standards across Europe. As a result, these ranges not only support efforts to achieve credits within the Health and Wellbeing section of the BREEAM assessment but also help to maintain a healthier and more comfortable learning environment for students and staff.



CASE STUDY

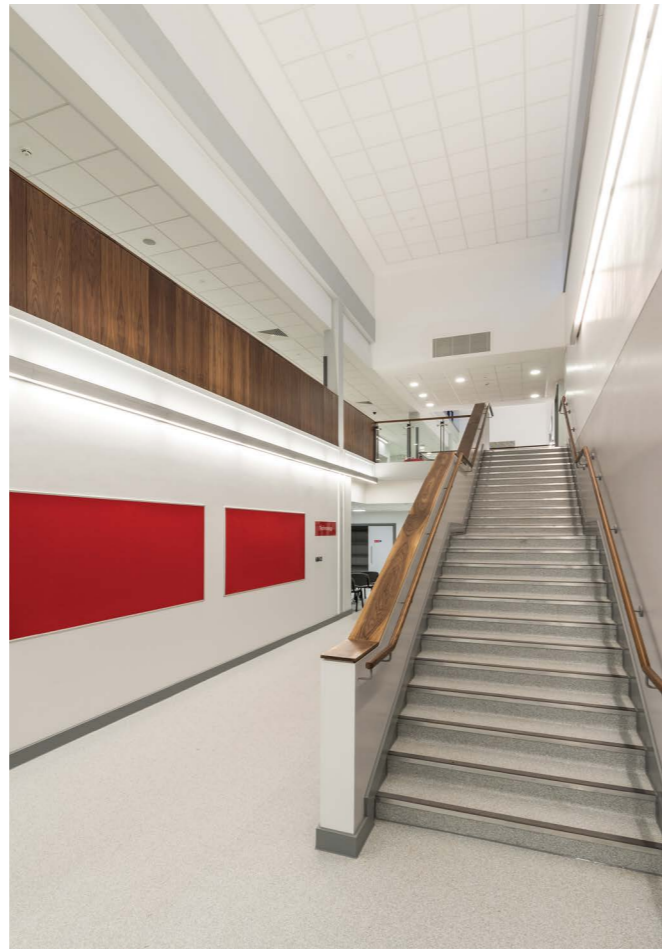
Sir Stanley Matthews Academy

Achieved BREEAM 'Very Good Rating'

PRODUCTS USED:
Classic Mystique PUR,
Polysafe Vogue Ultra PUR

A selection of Polyflor products featured in The Ormiston Sir Stanley Matthews Academy project in Stoke-on-Trent. Part of Stoke Building Schools for the Future, the £19m new build academy in Blurton is a Business and Enterprise Maths Specialist Academy and opened in a brand new building which can accommodate 1050 students.

A total of over 4500m² of Polyflor products were specified by Associated Architects of Birmingham and installed by Leicester based Westcotes Flooring Company, including Classic Mystique PUR to circulation areas and Polysafe Vogue Ultra PUR to stores, classrooms and laboratories. All Polyflor materials used in the project achieve BES 6001 certification for Responsible Sourcing, contributing towards the award of a BREEAM: Very Good Rating to the project.



CASE STUDY

North Middlesex Hospital, Maternity Unit

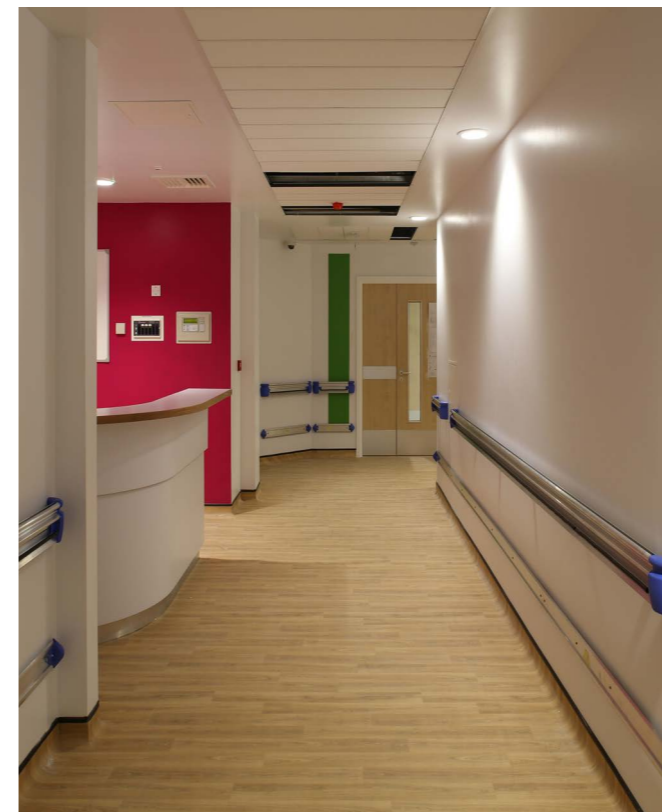
Achieved BREEAM 'Excellent Rating'

PRODUCTS USED:
Forest fx PUR, XL PU, Polysafe Standard PUR,
Polysafe Hydro Evolve, Finesse SD

A variety of vinyl flooring products from Polyflor were selected for installation at North Middlesex Hospital's new £17.9 million maternity unit.

This modular building project was completed off site by Portakabin Group, with main contractor Kier Construction, as part of a larger £80 million modernisation and expansion programme at the hospital. The new unit includes eight home-from-birth rooms, an 18-cot neonatal unit with three mother and baby rooms and extra capacity if necessary. A labour ward includes a delivery suite and two obstetrics operating theatres.

A selection of Polyflor safety, homogeneous and SD floor coverings, including Forest fx, XL PU, Polysafe Standard, Polysafe Hydro Evolve and Finesse SD, were used throughout the unit by Leeds-based flooring contractors Phoenix Flooring. Apart from SD these ranges achieve BES 6001 certification for Responsible Sourcing which can contribute to BREEAM credits. The North Middlesex Hospital maternity unit project achieved a BREEAM Excellent rating.



POLYFLOR™ INTERNATIONAL

Australia

Polyflor Australia
Tel: 1800 777 425
E-mail: sales@polyflor.com.au

Canada

Polyflor Canada Inc.
Tel: +1 905 364 3000
E-mail: sales@polyflor.ca

China

Polyflor Hong Kong
Tel: +(852) 2865 0101
E-mail: info@polyflor.com.hk

Colombia

Polyflor Ltd.(LATAM Office)
Tel: +57 3223082375
E-mail: info@polyflor.com

France

James Halstead France SAS
Tel: +33 (0) 8 20 20 32 11
E-mail: info@jhfrance.fr

Germany

objectflor Art und Design Belags GmbH
Tel: +49 (0) 2236 966 330
E-mail: info@objectflor.de

India

Polyflor India Pvt Ltd
Tel: +91 22 4023 2485
E-mail: info@polyflor.co.in

Ireland

Polyflor Ireland
Tel: +353 (1) 864 9304
E-mail: salesireland@polyflor.com

Malaysia

Polyflor Martex
Tel: 1300 80 7788
E-mail: sales@polyflor.com.my

Middle East

Polyflor FZE
Tel: +971 50 406 8114
E-mail: aelwakil@polyflorfze.ae

New Zealand

Polyflor New Zealand
Tel: +64 9 269 1111
Tel: 0800 765 935
E-mail: sales@polyflor.co.nz

Norway

Polyflor Nordic
Tel: +47 23 00 84 00
E-mail: firmapost@polyflor.no

Poland

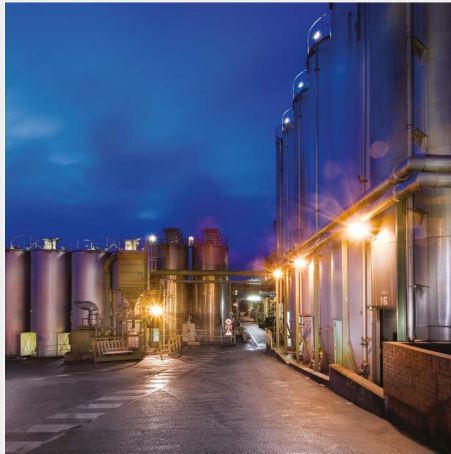
Polflor Sp. Z o.o.
Tel: +48 (0) 61 820 3155
E-mail: polyflor@polflor.com.pl

South Africa

Poly Sales Africa (Pty.) Ltd
Tel: +27 11 609 3500
E-mail: info@polyflor.co.za

Sweden

FalckDesign AB
Tel: +46 (0) 300 15820
E-mail: info@falckdesign.com



POLYFLOR™ UK

Polyflor Ltd. PO Box 3, Radcliffe New Road,
Whitefield, Manchester, M45 7NR

Sales Direct: +44 (0) 161 767 1122
Export Sales Direct: +44 (0) 161 767 1913
Reception: +44 (0) 161 767 1111
Sample Requests: +44 (0) 161 767 2551
Technical Support: +44 (0) 161 767 1912
E-mail: info@polyflor.com

