

Geotone QuickLay PUR



PRODUCT SPECIFICATION

Key Features

- > Loose lay resilient flooring designed for adhesive free installation
- > Install over substrates up to 97% RH
- > Immediate weld for seamless finish
- > Low VOC emissions
- > 100% recyclable & reusable



Product Format	Standard	Result
Gauge	ISO 24346 (EN 428)	2.2mm
Wear Layer	ISO 24340 (EN 429)	1.0mm
Total Weight	ISO 23997 (EN 430)	2700g/m ²
Finish		PUR

Sheet Size	Size	Shades	Quantity per Box	Coverage per Box/Roll
Sheet	2m x 20m	18	-	40m ²

Performance Requirements	Standard	Result
General Performance	ISO 10582 ASTM F1303	Conforms Type II, Grade 1, Class B Backing
Use Area	ISO 10874 (EN 685)	23, 34, 42
Slip Resistance	EN 13893 DIN 51130 / DIN EN 16165 Ann. B AS 4586 Appendix D ASTM D2047	Class DS R10 R10 SCOF ≥0.5
Binder Content	ISO 10582	Type I
Abrasion Resistance	EN 660-2	Group T
Reaction to Fire	EN 13501-1 ASTM E648 CAN/ULC S-102.2 AS ISO 9239-1	Class Bfl-S1 Class 1 FSV < 300; SDV < 500 >8.0kW/m ²
Static Electrical Propensity	EN 1815	≤2.0kV Classified as 'antistatic'
Residual Indentation	ISO 24343-1 ASTM F970 (Modified) ASTM 1914	≤0.10mm ≤0.005"(750psi) ≤0.005"
Castor Chair (continuous use)	ISO 4918 (EN 425)	Suitable
Furniture Leg	ISO 16581 (EN 424)	Complies
Flexibility	ISO 24344 (EN 435) ASTM F137	(Method A) Pass 20mm ø 0.25" Pass
Underfloor Heating		Suitable, max 27°C

Dimensional Stability	ISO 23999 (EN 434)	≤0.40%
Light Fastness	ISO 105-B02 (Method 3)	≥6
Resistance to Light	ASTM F1515	ΔE ≤ 8.0 - Meets
Resistance to Heat	ASTM F1514	ΔE ≤ 8.0 - Meets

Sustainability

	Standard	Result
Recyclable & Reusable		100%
Recycled Content		Contains recycled material
REACH		Compliant
Indoor Air Comfort Gold		Eurofins certified product
FloorScore		Certified
Finnish M1 Classification		Certified

Acoustic Performance

	Standard	Result
Impact Sound Reduction	ISO 10140-3	6dB

Maintenance Performance

	Standard	Result
Resistance to Chemicals	ISO 26987 (EN 423) ASTM F925	Good resistance Good resistance
Alco Hand Gels	Compatible for use with most commonly used alco-based hand gels	
Steam Cleaning	Suitable for steam cleaning on a periodic basis	

All Polyflor commercial sheet vinyl ranges provide a continuous, impervious and hygienic flooring solution which can be confidently cleaned in accordance with recommended maintenance procedures and approved maintenance products. The implementation of an effective cleaning regime is the most important defence against infection.

Hygiene

	Standard	Result
Bacterial Resistance	ISO 846 Part C	Does not favour growth



BS EN 14041



EN 14041

Polyflor Ltd. Head Office

PO Box 3, Radcliffe New Road, Whitefield, Manchester, M45 7NR • Tel: +44 (0) 161 767 1111 • Email: info@polyflor.com • www.polyflor.com

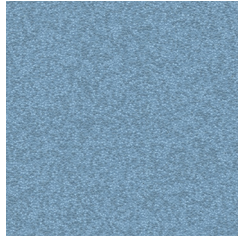
© At the time of writing and publication of sheet, all the information is specified correctly. The company reserves the right to change the specifications of this product at any time without prior notice to third parties.

Geotone Quicklay PUR

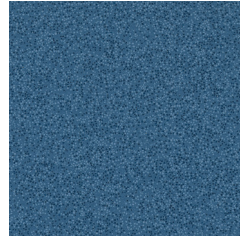
RANGE SHADES



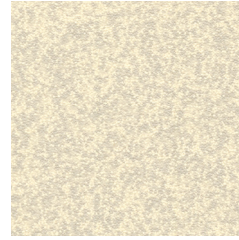
Alpine Blue 6274 w/r 6274
NCS S 1020-R80B LRV 53



Paddlestone 6276 w/r 6276
NCS S 3030-R90B LRV 28



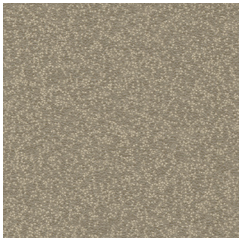
Star Sapphire 6277 w/r 6277
NCS S 5030-R90B LRV 13



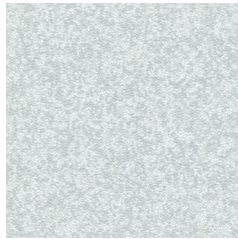
Glacial Mist 6281 w/r 6281
NCS S 1505-Y20R LRV 62



Shingle Beach 6282 w/r 6282
NCS S 3005-Y20R LRV 43



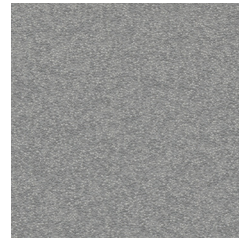
Volcanics 6283 w/r 6283
NCS S 5005-Y20R LRV 25



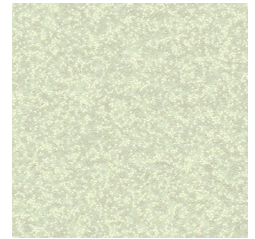
Pearl Grey 6271 w/r 6271
NCS S 1502-B LRV 62



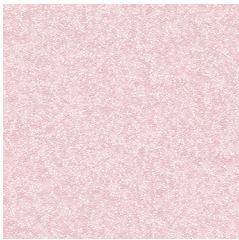
Flint Earth 6272 w/r 6272
NCS S 2010-B LRV 42



Classic Rock 6273 w/r 6273
NCS S 4502-B LRV 26



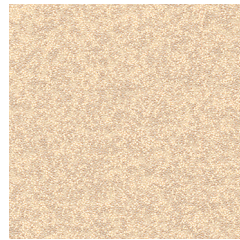
Prehnite 6278 w/r 6278
NCS S 1510-G40Y LRV 60



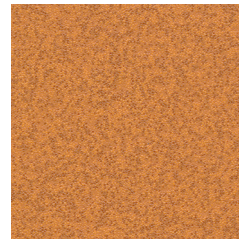
Periwinkle Pink 6280 w/r 6280
NCS S 1015-R20B LRV 64



Toasted Mauve 6285 w/r 6285
NCS S 2020-R60B LRV 40



Sand Bar 6284 w/r 6284
NCS S 1510-Y40R LRV 59



Solent Gold 6286 w/r 6286
NCS S 3040-Y50R LRV 25



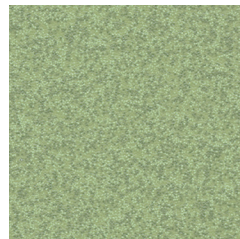
Pebble Time 6267 w/r 6267
NCS S 2500-N LRV 49



Fountain Stone 6268 w/r 6268
NCS S 4500-N LRV 31



Magnetite 6269 w/r 6269
NCS S 7500-N LRV 10



Aventurine 6279 w/r 6279
NCS S 3020-G30Y LRV 32

w/r - Weld Rod

LRV - Light Reflectance Value

NCS - Natural Colour System

Polyflor Ltd. Head Office

PO Box 3, Radcliffe New Road, Whitefield, Manchester, M45 7NR • Tel: +44 (0) 161 767 1111 • Email: info@polyflor.com • www.polyflor.com

© At the time of writing and publication of sheet, all the information is specified correctly. The company reserves the right to change the specifications of this product at any time without prior notice to third parties.

V2