

Voyager XL



PRODUCT SPECIFICATION

Key Features

- > Hardwearing, flexible vinyl sheet
- > Palette of versatile shades
- > Directional duotone marbled decoration
- > Marine applications include stairways, offices, corridors, walkways & store areas
- > Suitable for road & certain rail applications



Product Format	Standard	Result
Gauge	ISO 24346 (EN 428)	2.0mm
Total Weight	ISO 23997 (EN 430)	3200g/m ²

Sheet & Tile Sizes	Size	Shades	Quantity per Box	Coverage per Box/Roll
Sheet	2m x 20m	8	-	40m ²

Performance Requirements	Standard	Result
General Performance	ISO 10581 ASTM F1913	Conforms Conforms
Slip Resistance	EN 13893 DIN 51130 / DIN EN 16165 Ann. B AS 4586 Appendix D	Class DS R9 R9
Binder Content	ISO 10581	Type II
Abrasion Resistance	EN 660-2	Group M
Reaction to Fire	IMO MSC 307 (88) Annex 1 Part 2 and 5 EN 13501-1 ASTM E662 ASTM E648 AS ISO 9239-1	Pass Class Bfl-S1 <450 Class 1 >8.0 kW/m ²
Marine Usage	American Bureau of Shipping Marine Equipment Directive 2014/90/EU SOLAS 74 China Classification Society Class NK	Approved Conforms Conforms Conforms Conforms
UK Marine Approval	The Merchant Shipping (Marine Equipment) Regulations 2016	Conforms
Static Electrical Propensity	EN 1815	≤2.0kV Classified as 'antistatic'
Residual Indentation	ASTM F970 (Modified) ISO 24343-1	<0.125mm (750psi) ≤0.10mm
Castor Chair (continuous use)	ISO 4918 (EN 425)	Suitable
Light Fastness	ISO 105-B02 (Method 3)	≥6

Sustainability

Standard	Result
Recyclable	100%
Recycled Content	25%
REACH	Compliant

Maintenance Performance

Standard	Result
Resistance to Chemicals	ISO 26987 (EN 423) ASTM F925 Excellent Excellent
Alco Hand Gels	Compatible for use with most commonly used alco-based hand gels
Steam Cleaning	Suitable for steam cleaning on a periodic basis

All Polyflor Voyager sheet vinyl ranges provide a continuous, impervious and hygienic flooring solution which can be confidently cleaned in accordance with recommended maintenance procedures and approved maintenance products. The implementation of an effective cleaning regime is the most important defence against infection. Regular light maintenance is more cost-effective than periodic heavy maintenance and more beneficial to the floor covering.



BS EN 14041



EN 14041



UK MARINE CERTIFIED



MED CERTIFIED

Polyflor Ltd. Head Office

PO Box 3, Radcliffe New Road, Whitefield, Manchester, M45 7NR • Tel: +44 (0) 161 767 1111 • Email: info@polyflor.com • www.polyflor.com

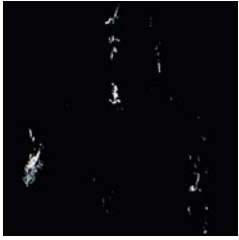
© At the time of writing and publication of sheet, all the information is specified correctly. The company reserves the right to change the specifications of this product at any time without prior notice to third parties.

V2

Voyager XL



RANGE SHADES



8640V w/r 8640
NCS S 8502-R LRV 6



9200V w/r 9200
NCS S 4000-N LRV 32



9110V w/r 9110
NCS S 3010-Y30R LRV 40



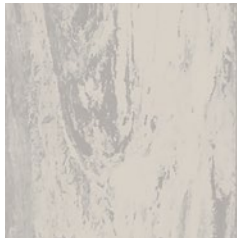
9120V w/r 9120
NCS S 4502-G LRV 28



8580V w/r 8580
NCS S 5030-R LRV 9



9170V w/r 9170
NCS S 4020-R90B LRV 23



9340V w/r 9340
NCS S 2002-Y50R LRV 54



9180V w/r 9180
NCS S 3020-Y10R LRV 37

w/r - Weld Rod

LRV - Light Reflectance Value

NCS - Natural Colour System

Polyflor Ltd. Head Office

PO Box 3, Radcliffe New Road, Whitefield, Manchester, M45 7NR • Tel: +44 (0) 161 767 1111 • Email: info@polyflor.com • www.polyflor.com

© At the time of writing and publication of sheet, all the information is specified correctly. The company reserves the right to change the specifications of this product at any time without prior notice to third parties.

V2